

NPV BIDIRECTIONAL VALVE, MODIFIED FOR HEAVY STOCK

SERIES 175

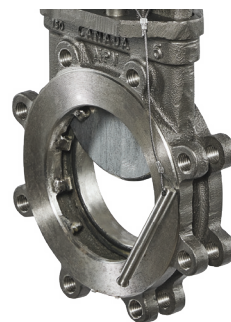
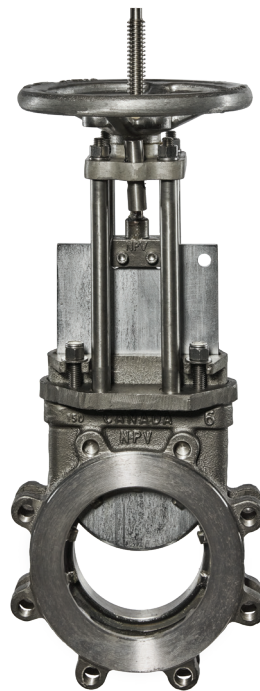
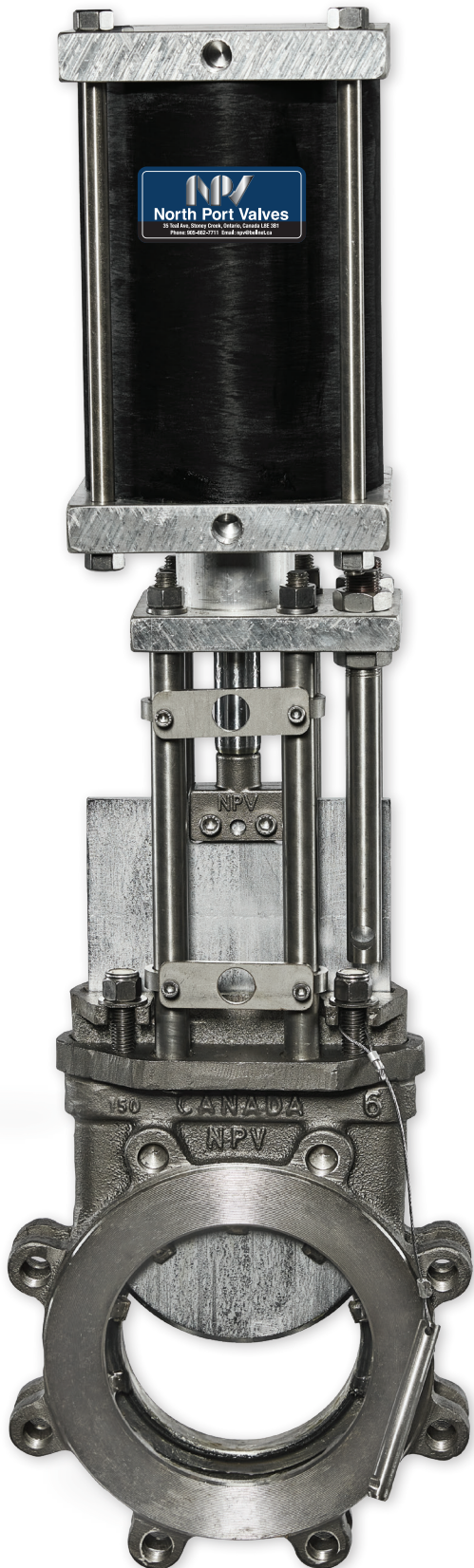
FEATURES AND BENEFITS

1. The Series 175 is a modified version of the Series 100 and or 150
2. Modifications include:
 - Additional lugs are welded into the body between the 4 & 8 o'clock positions to better hold the gate in place during cycling of valve
 - Additional machining to widen port which minimizes cavity in bottom of the valve
3. Modifications allow for bidirectional flow and pressures, and prevents dewatering of stock
4. Valve is to be installed in reverse of standard unidirectional installation practices. Seat side must be inlet side
5. This valve is most commonly offered in sizes 14 inch and larger, and is utilized in Heavy Stock applications with more than 12% stock consistency
6. All manual valves are equipped with a stainless steel lockout bar. All automated valves are equipped with a stainless steel mechanical lockout and bar



TYPICAL APPLICATIONS INCLUDE

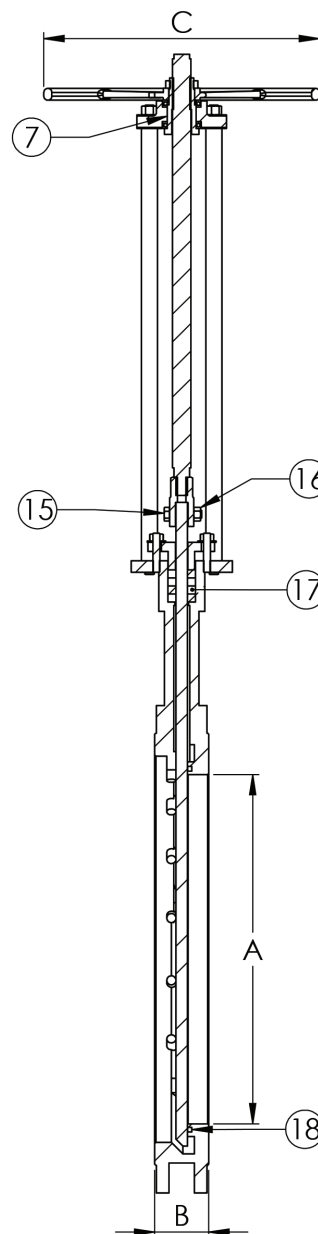
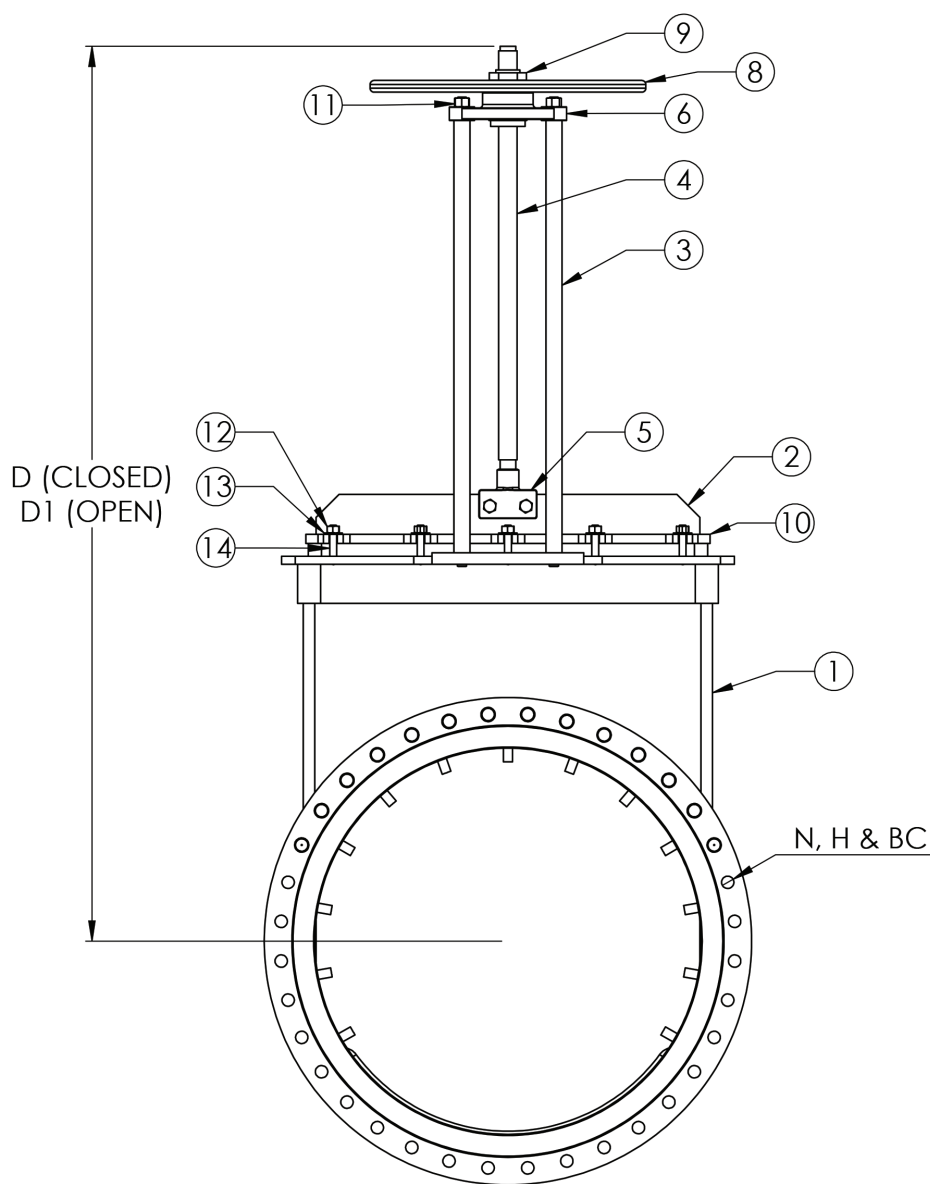
1. Heavy pulp stock, more than 12% stock consistency
2. High vibration and or pipe stress where a two-piece body valve may have issues



Additional welded-in lugs

NPV BIDIRECTIONAL VALVE, MODIFIED FOR HEAVY STOCK - HANDWHEEL OPERATED

SERIES 175



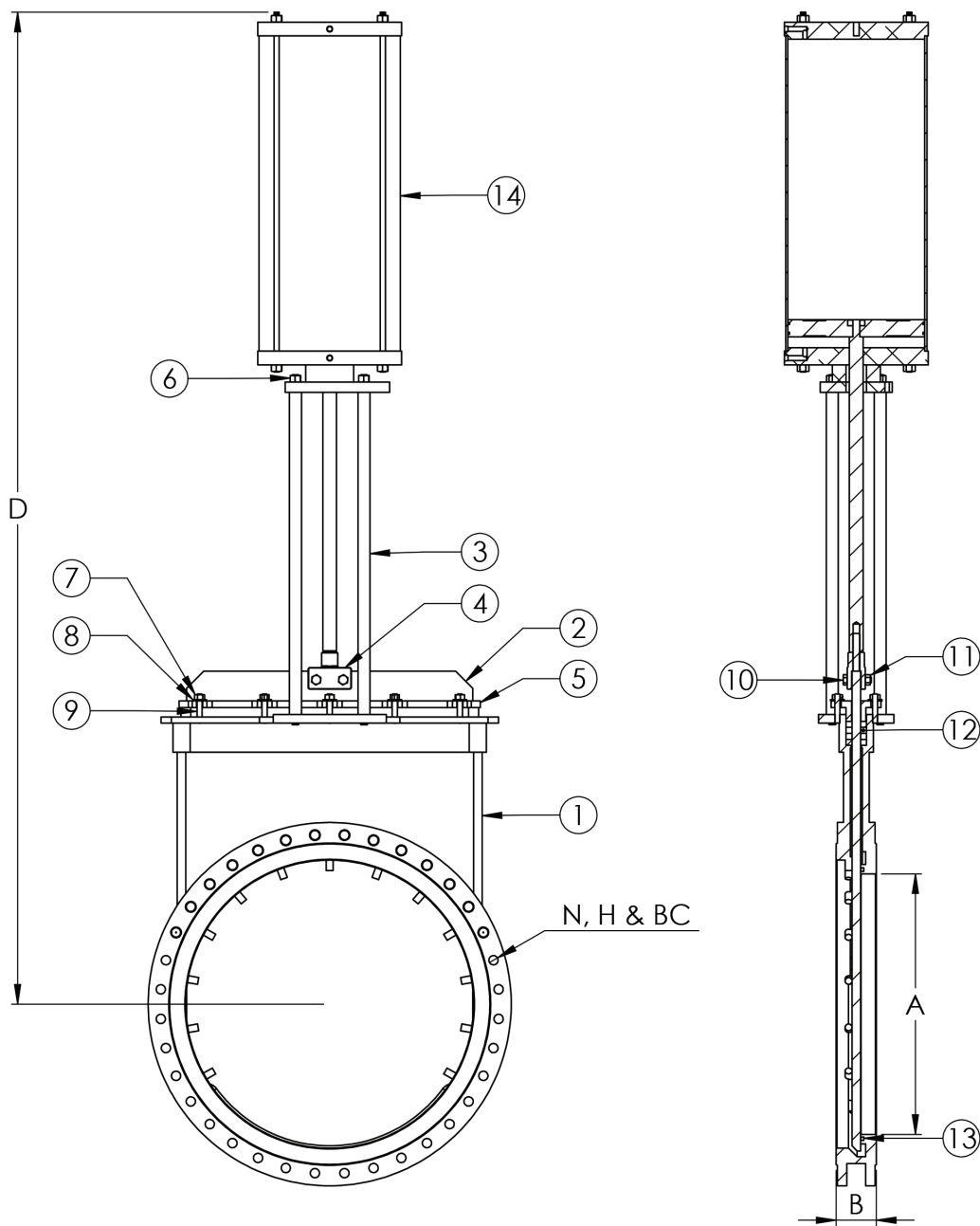
	2"	3"	4"	5"	6"	8"	10"	12"	14"
A	2"	3"	3 3/4"	4 7/8"	5 3/4"	7 5/8"	9 1/2"	11 1/8"	13 3/16"
B	1 7/8"	2"	2"	2 1/4"	2 1/4"	2 3/4"	2 3/4"	3"	3"
N(HOLES)	4	4	8	8	8	8	12	12	12
H(TAP)	5/8" - 11	5/8" - 11	5/8" - 11	3/4" - 10	3/4" - 10	3/4" - 10	7/8" - 9	7/8" - 9	1" - 8
BC	4 3/4"	6"	7 1/2"	8 1/2"	9 1/2"	11 3/4"	14 1/4"	17"	18 3/4"
C	7 1/2"	7 1/2"	7 1/2"	9"	9"	11 3/4"	11 3/4"	15 3/4"	15 3/4"
D	11 5/8"	13 1/2"	15"	17"	18 1/4"	23"	28"	31 7/8"	36 7/8"
D1	14 3/4"	17 1/8"	19"	22 3/8"	23 1/2"	30 5/8"	37 1/2"	43 7/8"	50 5/8"
WGT.	21	27	32	38	48	86	120	164	228

	16"	18"	20"	24"	30"	36"	42"	48"
A	15 35/64"	17 7/16"	19 11/32"	23"	28 5/16"	33 1/2"	33 1/2"	38 1/2"
B	3 1/2"	3 1/2"	4 1/2"	4 1/2"	4 1/2"	5"	5"	5"
N(HOLES)	16	16	20	20	28	32	32	32
H(TAP)	1" - 8	1 1/8" - 7	1 1/8" - 7	1 1/4" - 7	1 1/4" - 7	1 1/2" - 7	1 1/2" - 7	1 1/2" - 7
BC	21 1/4"	22 3/4"	25"	29 1/2"	36"	42 3/4"	42 3/4"	42 3/4"
C	15 3/4"	20"	20"	23 5/8"	26 3/4"	31 1/2"	31 1/2"	31 1/2"
D	44 1/2"	48 1/4"	53 7/8"	61"	72 1/2"	90"	90"	90"
D1	60 1/2"	66"	73 5/8"	84 3/4"	106"	129"	129"	129"
WGT.	390	438	630	960	1390	1820	1820	1820

#	PART NAME	MATERIAL
1	BODY	CG8M (317 S.S.)
2	GATE	316L S.S.
3	STANCHION	303 S.S.
4	STEM	303 S.S.
5	COUPLING	CG8M (317 S.S.)
6	BRIDGE	ALUMINUM 356
7	YOKE SLEEVE	660 BRONZE
8	HANDWHEEL	ALUMINUM
9	HANDWHEEL NUT	NAVY BRASS
10	GLAND	CG8M (317 S.S.)
11	NYLOCK NUT	18.8 S.S.
12	GLAND NYLOCK NUT	18.8 S.S.
13	GLAND WASHER	18.8 S.S.
14	GLAND STUD	18.8 S.S.
15	COUPLING BOLT	18.8 S.S.
16	COUPLING NYLOCK NUT	18.8 S.S.
17	PACKING	TEFLON
18	O-RING	VITON

NPV BIDIRECTIONAL VALVE, MODIFIED FOR HEAVY STOCK - CYLINDER OPERATED

SERIES 175



	3"	4"	6"	8"	10"	12"	14"	16"
A	3"	3 3/4"	5 3/4"	7 5/8"	9 1/2"	11 1/8"	13 3/16"	15 35/64"
B	2"	2"	2 1/4"	2 3/4"	2 3/4"	3"	3"	3 1/2"
N(HOLES)	4	8	8	8	12	12	12	16
H(TAP)	5/8" - 11	5/8" - 11	3/4" - 10	3/4" - 10	7/8" - 9	7/8" - 9	1" - 8	1" - 8
BC	6"	7 1/2"	9 1/2"	11 3/4"	14 1/4"	17"	18 3/4"	21 1/4"
D	20 3/8"	22 1/4"	28 1/4"	34"	40"	47 1/2"	54 1/4"	63 3/4"

	18"	20"	24"	30"	36"	42"	48"
A	17 7/16"	19 11/32"	23"	28 5/16"	33 1/2"	39"	44"
B	3 1/2"	4 1/2"	4 1/2"	4 1/2"	5"	5"	6"
N(HOLES)	16	20	20	28	32	36	44
H(TAP)	1 1/8" - 7	1 1/8" - 7	1 1/4" - 7	1 1/4" - 7	1 1/2" - 6	1 1/2" - 6	1 1/2" - 6
BC	22 3/4"	25"	29 1/2"	36"	42 3/4"	49 1/2"	56"
D	68 1/2"	75 3/4"	87"	105 1/4"	126"	143 1/4"	144 3/4"

#	PART NAME	MATERIAL
1	BODY	CG8M (317 S.S.)
2	GATE	316L S.S.
3	STANCHION	303 S.S.
4	COUPLING	CG8M (317 S.S.)
5	GLAND	CG8M (317 S.S.)
6	NYLOCK NUT	18.8 S.S.
7	GLAND NYLOCK NUT	18.8 S.S.
8	GLAND WASHER	18.8 S.S.
9	GLAND STUD	18.8 S.S.
10	COUPLING BOLT	18.8 S.S.
11	COUPLING NYLOCK NUT	18.8 S.S.
12	PACKING	TEFLON
13	O-RING	VITON
14	AIR CYLINDER ASSEMBLY	N/A