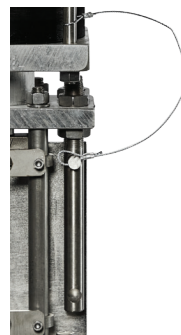




NPV cylinders: 5" -20" bore



Stainless steel mechanical lockout bars and pin

FEATURES AND BENEFITS

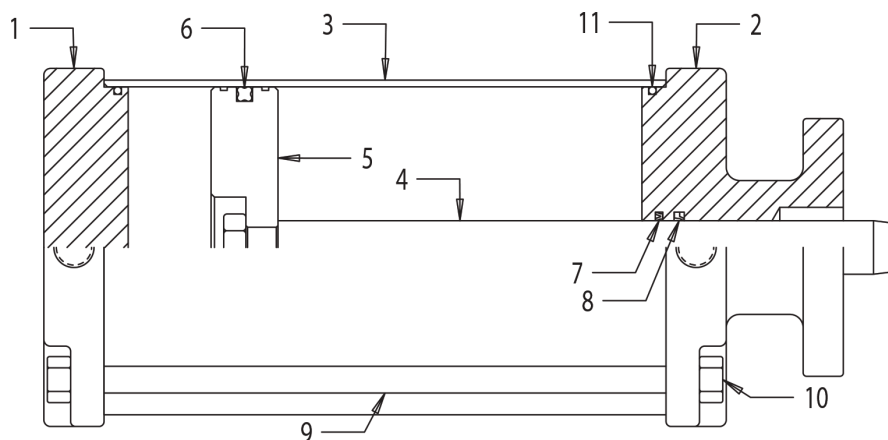
1. All cylinders manufactured by NPV mount directly to our valves eliminating need for an adapter plate. All gates are machined to adapt to manual or automated operation
2. Cylinder barrels are manufactured of a lightweight, high-strength, corrosion-resistant composite material, designed specifically for adverse environments
3. All cylinder operated valves supplied with Stainless Steel lockout bar and limit switch brackets
4. Piston seal is an elastomer quad seal providing longer life and positive seal compared to a standard o-ring seal
5. Cylinder stem seal is a U-cup design protected by a scraper for longer life and positive sealing
6. Length of lower cylinder bridge serves as guide for stem, reducing any side torque and extending seal life
7. To ensure a secure fit and enhance longevity, we now utilize a threaded rod connecting the clevis and stem. The rod is inserted into the stem, and the clevis is fastened onto the rod, leaving no exposed threads
8. Cylinders are easily field repairable by replacing complete soft goods kit includes o-rings, quad seal, wiper and u-cup
9. NPV Valves are designed to accept a new cylinder or convert manual valve to automated operation in line but under ZERO line pressure
10. Due to light weight construction of all NPV cylinders and the strength of 4-post topworks, most installations do not require additional support

NOTES:

- For valves 14" and larger installed in the horizontal or side-lying positions supports are recommended
- In applications with significant vibration, supports are recommended for all valve sizes

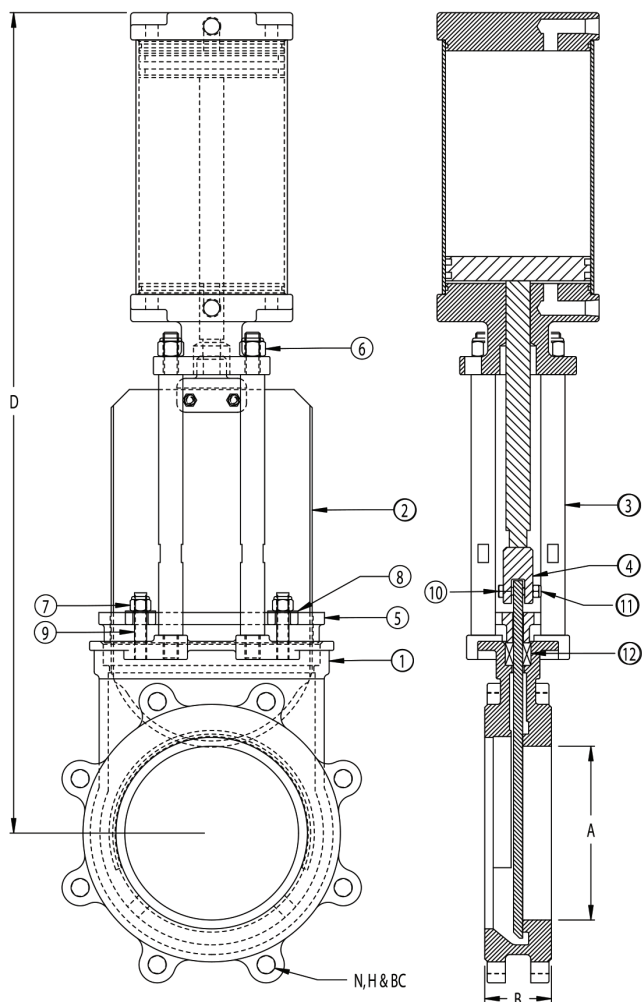
NPV PNEUMATIC CYLINDER

SERIES 600



PART #	DESCRIPTION	MATERIAL	QTY.
1	CAST TOP CAP	ALUMINUM 356	1
2	CAST BOTTOM CAP	ALUMINUM 356	1
3	CYLINDER	ALUMINUM/AMALGON	1
4	PISTON ROD	CHROMED*	1
5	PISTON HEAD	ALUMINUM	1
6	PISTON SEAL	BUNA	1
7	ROD SEAL	VITON	1
8	ROD WIPER	POLYURETHANE	1
9	TIE ROD	303 S.S.	4
10	TIE ROD NUT	304 S.S.	8
11	O-RING	BUNA	1

BORE SIZE	TIE RODS	
	DIA.	TORQUE
5"	1/2"	15-30
6"	1/2"	15-30
8"	1/2"	30-70
10"	5/8"	55-110
12"	5/8"	70-110
14"	5/8"	70-110
16"	5/8"	70-110
20"	5/8"	70-110



CYLINDER	WEIGHT (LBS)	AIR PORT SIZES
5" BORE	7	1/4" NPT
6" BORE	15	3/8" NPT
8" BORE	35	3/8" NPT
10" BORE	80	3/8" NPT
12" BORE	125	1/2" NPT
14" BORE	170	1/2" NPT
16" BORE	250	1/2" NPT
20" BORE	380	3/4" NPT

#	PART NAME	MATERIAL
1	BODY	CG8M (317 S.S.)
2	GATE	316L S.S.
3	STANCHION	303 S.S.
4	COUPLING	CG8M (317 S.S.)
5	GLAND	CG8M (317 S.S.)
6	NYLOCK NUT	18.8 S.S.
7	GLAND NYLOCK NUT	18.8 S.S.
8	GLAND WASHER	18.8 S.S.
9	GLAND STUD	18.8 S.S.
10	COUPLING BOLT	18.8 S.S.
11	COUPLING NYLOCK NUT	18.8 S.S.
12	PACKING	SYNTHETIC (2-12PH)
13	AIR CYLINDER ASSEMBLY	N/A

	3"	4"	6"	8"	10"	12"	14"	16"	18"	20"	24"	30"
D	20 3/8"	22 1/4"	28 1/4"	34"	40"	47 1/2"	54 1/4"	63 3/4"	68 1/2"	75 3/4"	87"	105 1/4"