

NPV DUCO Bidirectional Perimeter Seated Valve with Cone Deflector

Series 250

Features and Benefits:

1. Perimeter seating guarantees bi-directional bubble tight shutoff. Cavity free body design prevents de-watering of pulp stock and is ideal in slurries, powders, plastics and other solids handling applications
2. Addition of Cone Deflector protects and extends the integrity of the perimeter seat in heavy solids, slurries and abrasive applications
3. Elastomer seat is mechanically retained between body halves preventing movement or separation from the body, unlike standard o-ring seated valves
4. Precision machined body halves serve as scrapper blades, which clean the gate and extend the life of the packing system
5. Two-piece body design simplifies repair/ replacement of gate, packing, seat ring and topworks assembly
6. All NPV/DUCO Valve body castings are of 317SS (CG8M). Cone deflectors are available in 317SS, 400SS heat treated and hardened, and polyurethane
7. All external valve components- stanchions, bolting, bridge, stem, clevis, packing follower- are stainless steel construction which eliminates external corrosion
8. Precision machining of the stuffing box with the live-loaded packing in conjunction with an additional Viton O-ring provides for a very dependable and adjustable packing system
9. Two piece body design allows for option to use the standard perimeter seat or replaceable cartridge seats depending on requirements of application



Cone Deflector before instillation



Outlet side with Cone Deflector

DUFRENE AND COMPANY, LLC
EXCLUSIVE AGENT/NORTH PORT VALVES

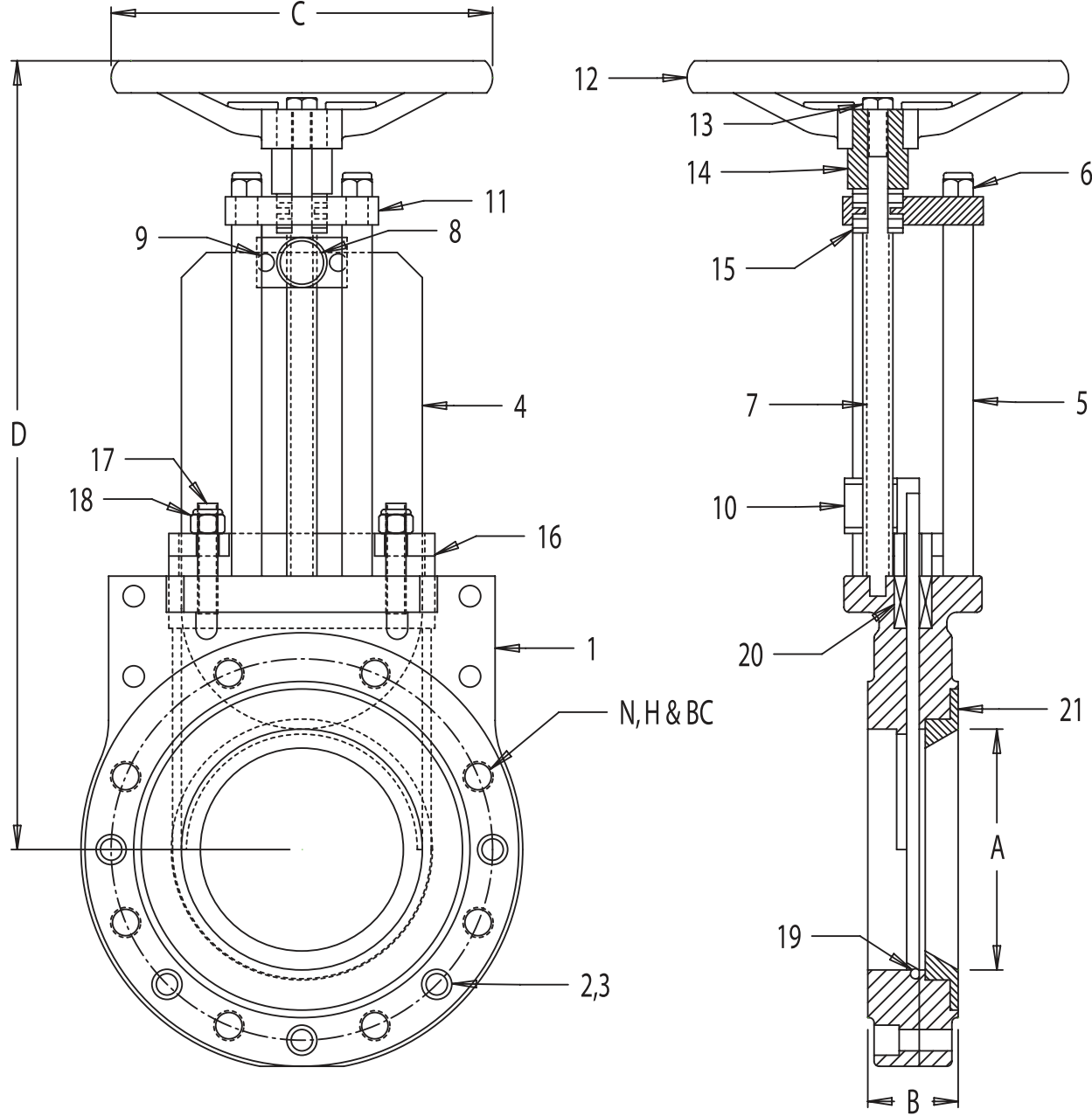
BRIAN M. DUFRENE
VICE PRESIDENT/BUSINESS DEVELOPMENT

CELL: 225-938-5025
brian@dufrenevalve.com
OFC: 225-753-5006
FAX: 225-753-8828
sales@dufrenevalve.com

Typical applications include:

1. Wet and Dry ash
2. Pellets and granules
3. Plastic chips
4. Slurries with heavy solids such as lime slurry, lime mud, animal rendering plant waste and raw sewage

NPV DUCO Bidirectional Perimeter Seated Valve with Cone Deflector



	3"	4"	6"	8"	10"	12"	14"	16"	18"
A	3"	4"	6"	8"	10"	12"	14"	16"	18"
B	2"	2"	2 1/4"	2 3/4"	2 3/4"	3"	3"	3 1/2"	3 1/2"
N(HOLES)	4	8	8	8	12	12	12	16	16
H(TAP)	5/8" - 11	5/8" - 11	3/4" - 10	3/4" - 10	7/8" - 9	7/8" - 9	1" - 8	1" - 8	1 1/8" - 7
BC	6"	7 1/2"	9 1/2"	11 3/4"	14 1/4"	17"	18 3/4"	21 1/4"	22 3/4"
C	7 1/2"	7 1/2"	9"	11 3/4"	11 3/4"	15 3/4"	15 3/4"	15 3/4"	20"
D	15 1/2"	17"	20 1/4"	25"	30"	33 7/8"	36 7/8"	44 1/2"	48 1/4"

	PART NAME	MATERIAL
1	BODY	CG8M (317 S.S.)
2	BODY BOLTS	18.8 S.S.
3	BODY NUTS	18.8 S.S.
4	GATE	316L S.S.
5	STANCHION	303 S.S.
6	NYLOK NUT	18.8 S.S.
7	STEM	303 S.S.
8	COUPLING	303 S.S.
9	COUPLING BOLT	18.8 S.S.
10	STEM NUT	660 BRONZE
11	BRIDGE	304 S.S.
12	HANDWHEEL	ALUMINUM
13	HANDWHEEL BOLT	18.8 S.S.
14	YOKE	303 S.S.
15	BEARINGS	N/A
16	GLAND	CG8M (317 S.S.)
17	GLAND STUDS	18.8 S.S.
18	GLAND NYLOK NUT	18.8 S.S.
19	O-RING	VITON
20	PACKING	SYNTHETIC (2-12PH)
21	DEFLECTOR CONE	303 S.S.